



MONTHLY MEMBERSHIP PROGRESS REPORT

District 105 D

Results as of: 05/31/2018

GMT: JOOST PAIJMANS

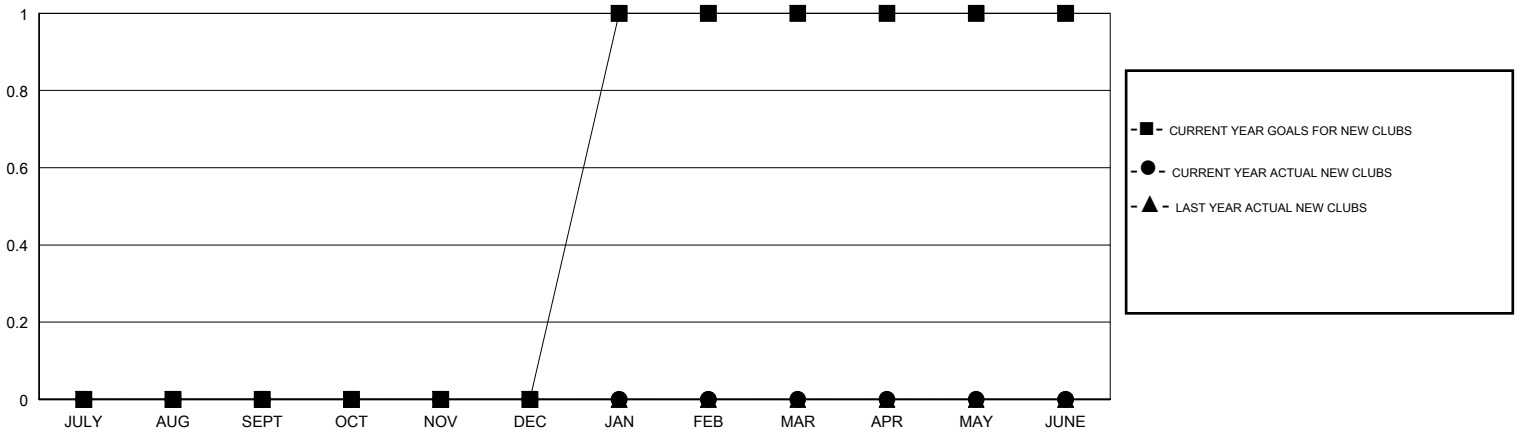
LOCATION ENGLAND

GMT CA

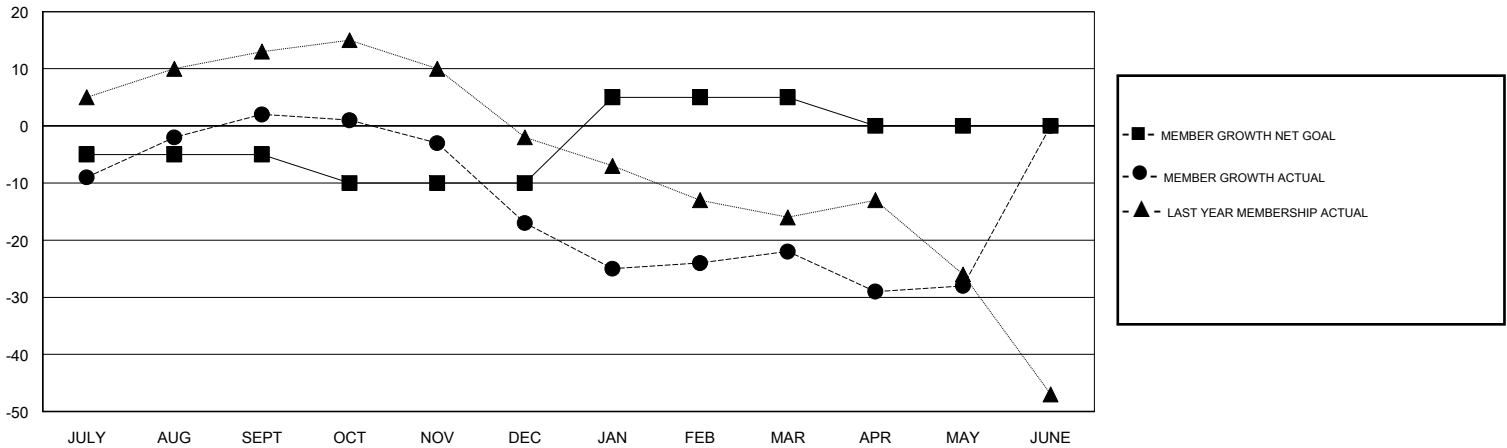
Clubs			
RESULTS FOR 2017-2018			
QUARTER	NEW CLUB GOAL	NEW CLUBS	DROPPED CLUBS
JULY/AUG/SEPT	0	0	1
OCT/NOV/DEC	0	0	1
JAN/FEB/MAR	1	0	0
APR/MAY/JUNE	0	0	1

Members			
RESULTS FOR 2017-2018			
QUARTER	MEMBER GROWTH NET GOAL	MEMBER GROWTH ACTUAL	DROPPED MEMBERS ACTUAL (including transfers)
JULY/AUG/SEPT	-5	29	24
OCT/NOV/DEC	-5	16	35
JAN/FEB/MAR	15	27	26
APR/MAY/JUNE	-5	22	25

GOALS AND ACTUAL NEW CLUBS CUMULATIVE



GOALS AND ACTUAL MEMBERS CUMULATIVE



DROPPED CLUBS: 3	35 CLUBS OF 59 ADDED 1 OR MORE NEW MEMBERS	<u>GENDER DISTRIBUTION</u>	
DROPPED MEMBERS		MALE	801 (69.05%)
DECEASED	9	FEMALE	359 (30.95%)
CLUB CANCELLED	4	Women Percentage Fiscal Year Goal: 33%	
OTHER	97	TOTAL FAMILY UNIT MEMBERS	177
TOTAL	110	FAMILY MEMBERS PAYING HALF DUES	89

[CLICK HERE FOR CUMULATIVE MEMBERSHIP DATA](#)